

ModusToolbox™ Setup program user guide

Setup program version 1.0.0

About this document

Scope and purpose

ModusToolbox™ software is a set of tools and libraries that support device configuration and application development. These tools enable you to integrate our devices into your existing development methodology. This document provides information and instructions for using the ModusToolbox™ Setup program.

Document conventions

Convention	Explanation
Bold	Emphasizes heading levels, column headings, menus and sub-menus.
<i>Italics</i>	Denotes file names and paths.
Courier New	Denotes APIs, functions, interrupt handlers, events, data types, error handlers, file/folder names, directories, command line inputs, code snippets.
File > New	Indicates that a cascading sub-menu opens when you select a menu item.

Reference documents

Refer to the following documents for more information as needed:

- [ModusToolbox™ tools package installation guide](#) –Provides information and instructions about installing the tools package on Windows, Linux, and macOS.
- [ModusToolbox™ tools package user guide](#) –Provides information about all the tools included with ModusToolbox™ tools package.
- [Dashboard user guide](#) –Provides specific information about the Dashboard tool.

Table of contents

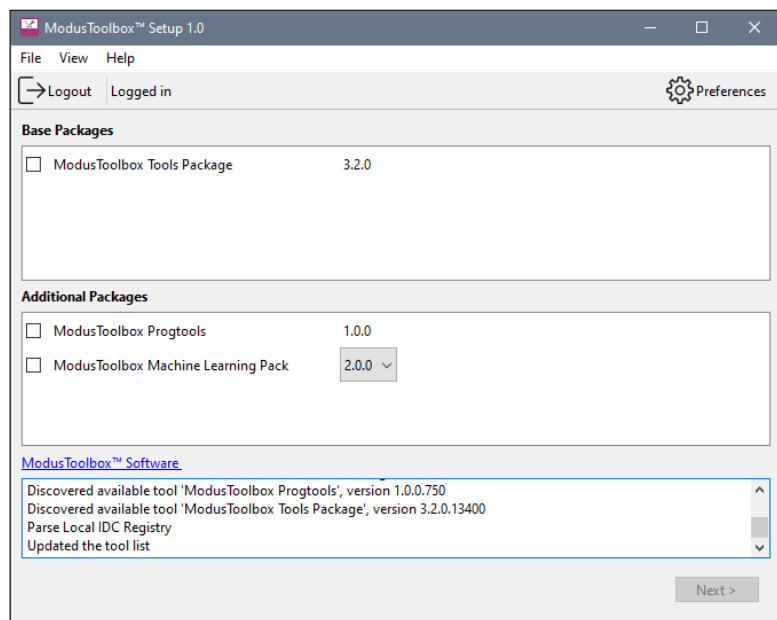
Table of contents

About this document	1
Table of contents	2
1 Introduction	3
1.1 Installing the Setup program	3
1.2 Launching the Setup program	4
2 Installing and updating ModusToolbox™ packages	5
2.1 Select packages.....	5
2.2 Verify/configure.....	6
3 GUI description	8
3.1 Menus.....	8
3.2 Main toolbar	9
3.3 Log panel	9
3.4 Preferences dialog.....	10
4 Troubleshooting	11
4.1 Unable to login with Infineon Developer account	11
4.2 Unable to download the packages (network issue).....	11
4.3 Infineon Launcher Service doesn't function properly	11
4.4 ModusToolbox™ Setup program is stuck downloading or installing a program.....	11
Revision history	12

Introduction

1 Introduction

The ModusToolbox™ Setup program was created for ModusToolbox™ tools package version 3.2 and later to improve the getting started user experience for installing ModusToolbox™ and its various packages. It also provides a simple path for updating versions and installing new content when required.



The Setup program provides a flexible installation experience and addresses two important problems:

- It ensures you can quickly get all the software you need to start developing applications.
- It helps you manage all these pieces, learn about new packages and install them, and keep them up to date.

The Setup program improves the user experience in the following main areas:

- During initial installation, it will allow you to select the pieces of ModusToolbox™ software that interest you. This includes platform tools, patches, packs and programming tools.
- During development, it will give you an easy way to track versions and update/install/uninstall content as needed.
- If you attempt to create an application or add a library that requires content not currently installed, the associated tools (including Project Creator and Library Manager) will inform you of the required packages.

1.1 Installing the Setup program

The Setup program is available on the Infineon Developer Center (IDC) website here: <https://softwaretools.infineon.com/tools/com.ifx.tb.tool.modustoolboxsetup>. Download the installer for your operating system and run it as applicable for your system.

1.1.1 System requirements

ModusToolbox™ Setup program is supported on the following 64-bit operating systems:

Host OS	Supported	Recommended
Windows	10, 11	11
macOS	Monterey and Ventura (Intel processors)	Monterey
Linux	Ubuntu 20.04 LTS and 22.04 LTS	22.04 LTS

Introduction

1.1.2 Prerequisites

The ModusToolbox™ Setup program depends on the Infineon Developer Center Launcher Service. This service is automatically installed by the ModusToolbox™ Setup installer.

On Ubuntu Linux, the Setup program depends on the “sudo” and “apt” utilities to perform the automated installation of the ModusToolbox™ packages. Additionally, “gnome-terminal” application is used to perform the interactive uninstallation of the packages and self-update of the tool. These are standard tools provided in Linux.

On macOS, the Setup program depends on the “sudo” and “Installer” utilities to perform the automated installation of the packages. Additionally, “osascript” utility is used to perform the uninstallation. These utilities are provided as part of default macOS installation.

1.1.3 Installation process

Follow the prompts from the installer to install the Setup program.

1.2 Launching the Setup program

You can launch the Setup program in various ways:

- If you have not installed the ModusToolbox™ tools package, run the Setup program executable as applicable for your operating system.
- If you have installed the ModusToolbox™ tools package, you can click the link from the ModusToolbox™ Dashboard.



Also, when using other ModusToolbox™ tools such as Project Creator or Library Manager, if the application does not have a required asset, follow the prompt to launch the Setup program and install the required package.

Installing and updating ModusToolbox™ packages

2 Installing and updating ModusToolbox™ packages

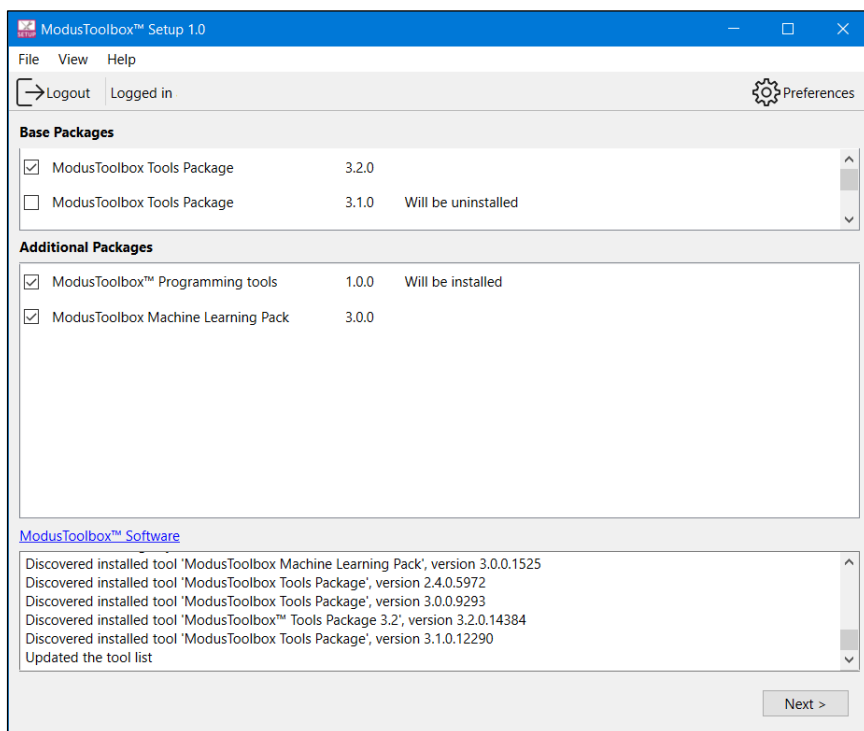
After the Setup program has been installed, you can use it to install and update various ModusToolbox™ packages.

2.1 Select packages

The Setup program gathers package data from the IDC online and local tools registry, and then displays all installed and available packages along with version information. For the purposes of this document, a package includes ModusToolbox™ platform tools, patches, packs, programming tools, and other tools such as the Memory Analyzer. The Setup program displays a list of the available packages, grouped by two categories:

- **Base Packages:** This includes the ModusToolbox™ tools packages and patches.
- **Additional Packages:** This includes all other packages relevant to the ModusToolbox™ ecosystem, including programming tools, technology packs, early access packs, and auxiliary tools.

Select items to be installed, updated and/or uninstalled, and click **Next >**.

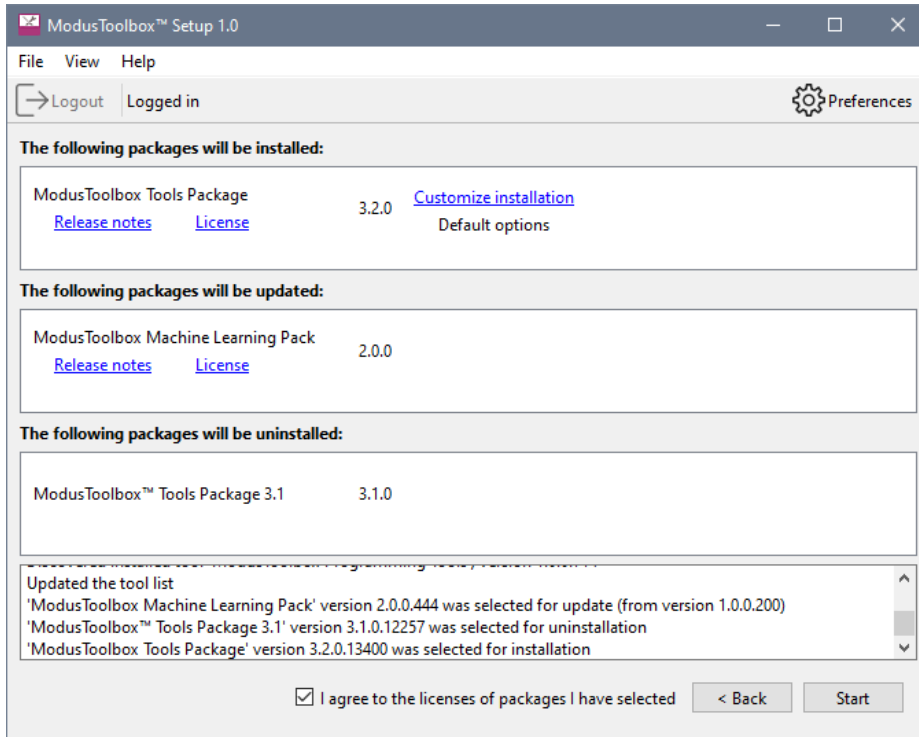


- Items with a check mark will be installed or updated if not already installed and up to date.
- Items with no check mark will be uninstalled if they are currently installed.

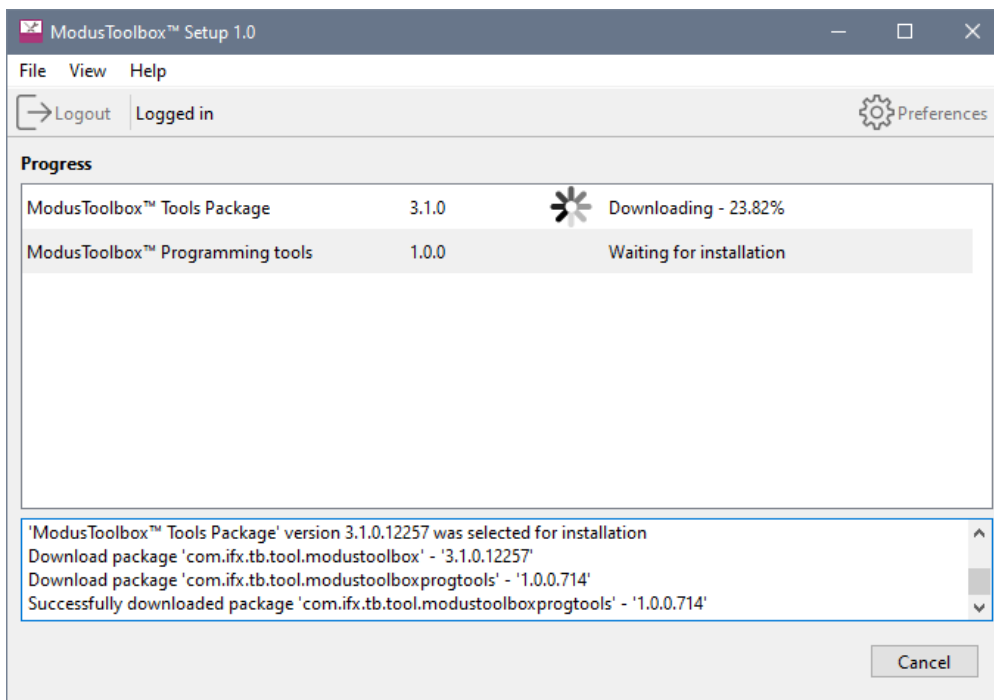
Installing and updating ModusToolbox™ packages

2.2 Verify/configure

The Setup program then shows the actions that will be performed when you proceed with the install/update. Each package provides links to Release Notes and License information. There is also an option to customize the installation. For example, on Windows and macOS the installation scope of the package can be customized.

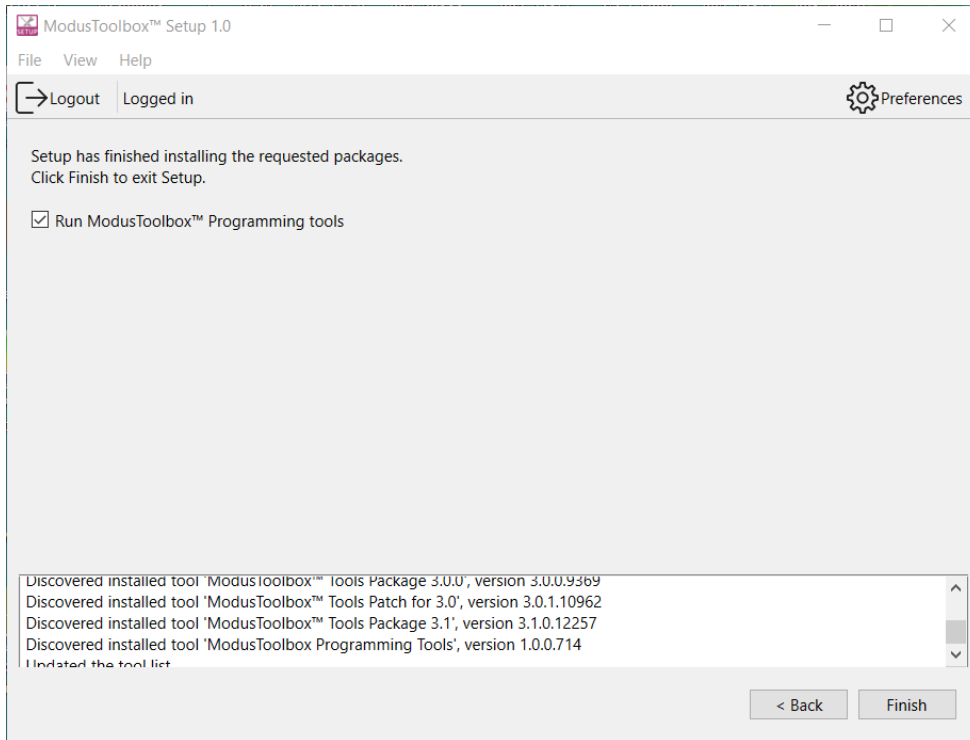


Click the checkbox to accept the license agreements, and then click **Start**. This shows the progress of all the packages being installed, updated, and removed.



Note that pressing the **Cancel** button will not affect install operations that have already started, only pending install operations will be stopped.

Installing and updating ModusToolbox™ packages



When all packages are installed/updated/uninstalled the final launch screen is shown. Click **Finish** to close the Setup program or click **Back** to return to the select packages window.

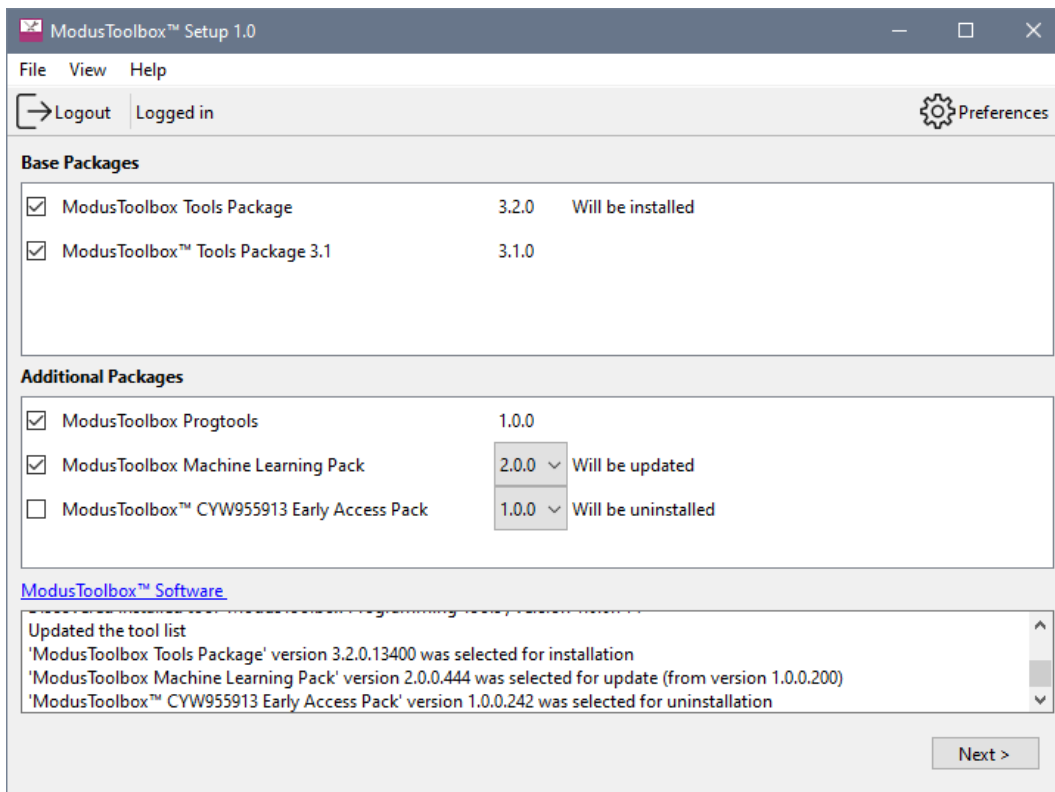
The final screen also allows you to specify which installed tool(s) should be opened after the Setup program exits.

GUI description

3 GUI description

The main GUI window of the ModusToolbox™ Setup program contains the following elements:

- Main menu
- Main toolbar
- Tool view
- Log panel
- Actions bar



3.1 Menus

The main application menu consists of multiple menu item groups as defined below.

3.1.1 File

The **File** menu consists of the following menu items:

Menu item	Description
Check for updates	Manually checks to see if there are any updates to the Setup program itself. The tool can be configured to check for updates on startup. If updates are available, the ModusToolbox™ Setup Installer package is downloaded and executed once the program is closed.
Preferences	Opens the Preferences dialog .
Login / Logout	The login function provides access to installable packages from the IDC. The login is the same as the IDC login. If you don't already have an account, you can create one at https://community.infineon.com .
Exit	Exits the ModusToolbox™ Setup program.

GUI description

3.1.2 View

The **View** menu allows you to navigate between different views. For example, it allows to switch between the select packages and configure screens.

3.1.3 Help

The **Help** menu consists of the following menu items:

- **View Help** – Opens this document.
- **About** – Opens the About box for version information, with links to open <https://www.infineon.com> and the current session log file.

3.2 Main toolbar

The main toolbar consists of **Login**, **Logout** and **Preferences** buttons. While **Login** is visible, **Logout** is not. When you are logged in, your email address is displayed along with the **Logout** button.

The **Preferences** button opens the [Preferences dialog](#).

3.3 Log panel

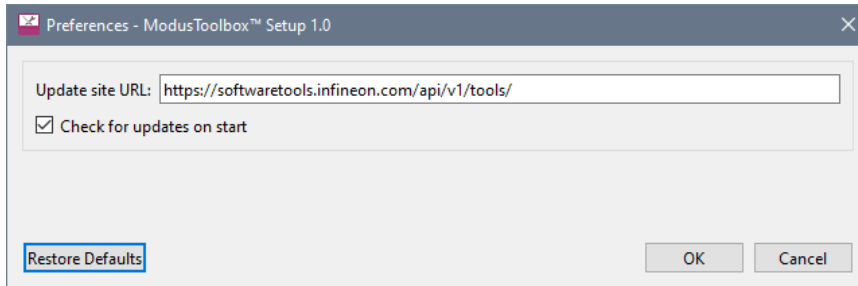
The log panel area displays the information messages relevant for the end user. Examples of events that produce messages to the panel view:

- User logged in / logged out
- Completed/failed downloading the tool data from the online tool registry
- Package was selected/deselected in the tool selection view
- Dependent package version was changed (to satisfy the updated tool dependency constraints)
- Tool configuration (installation mode, target directory was changed)
- Tool download started/finished
- Tool installation/uninstallation started/finished

GUI description

3.4 Preferences dialog

You can open the Preferences dialog from the main menu or main toolbar button.



There are two settings available:

- **Update site URL:** the address of the IDC Online Tools registry. Usually there is no need to customize this address to a non-default URL.
- **Check for updates on start:** disable this option to prevent the program from automatically checking for an update at each start.

Use the **Restore Defaults** button to revert the options back to their default values.

Troubleshooting

4 Troubleshooting

4.1 Unable to login with Infineon Developer account

Open <https://community.infineon.com/> in the browser and create an account. Then, use the Login button to open the login form and enter the login and password.

4.2 Unable to download the packages (network issue)

Open <https://www.infineon.com/modustoolbox>, download the packages from the ModusToolbox™ Software, and install manually.

Alternatively, start the ModusToolbox™ Setup program on a different PC with a network connection, install the required packages, and copy the installer(s) from the package download directory to your PC.

Location of the download directory:

Windows	%USERPROFILE%\AppData\Local\Infineon_Technologies_AG\Infineon-Toolbox\Tools
Linux	\$HOME/.local/share/Infineon_Technologies_AG/Infineon-Toolbox/Tools
macOS	\$HOME/Library/Application Support/Infineon_Technologies_AG/Infineon-Toolbox/Tools

4.3 Infineon Launcher Service doesn't function properly

Close the ModusToolbox™ Setup program.

Close the Launcher Service using the system tray icon.

Start the ModusToolbox™ Setup program again.

4.4 ModusToolbox™ Setup program is stuck downloading or installing a program

Close the running processes of the ModusToolbox™ Setup program and Infineon Launcher Service using the Task Manager.

Start the ModusToolbox™ Setup program again.

Revision history

Revision history

Revision	Date	Description
**	2023-09-27	New document.

Trademarks

All referenced product or service names and trademarks are the property of their respective owners.

Edition 2023-09-27

**Published by
Infineon Technologies AG
81726 Munich, Germany**

**© 2023 Infineon Technologies AG.
All Rights Reserved.**

Do you have a question about this document?

Email: erratum@infineon.com

**Document reference
002-39176 Rev. ****

Important notice

The information given in this document shall in no event be regarded as a guarantee of conditions or characteristics ("Beschaffheitsgarantie")

With respect to any examples, hints or any typical values stated herein and/or any information regarding the application of the product, Infineon Technologies hereby disclaims any and all warranties and liabilities of any kind, including without limitation warranties of non-infringement of intellectual property rights of any third party.

In addition, any information given in this document is subject to customer's compliance with its obligations stated in this document and any applicable legal requirements, norms and standards concerning customer's products and any use of the product of Infineon Technologies in customer's applications.

The data contained in this document is exclusively intended for technically trained staff. It is the responsibility of customer's technical departments to evaluate the suitability of the product for the intended application and the completeness of the product information given in this document with respect to such application.

Warnings

Due to technical requirements products may contain dangerous substances. For information on the types in question please contact your nearest Infineon Technologies office.

Except as otherwise explicitly approved by Infineon Technologies in a written document signed by authorized representatives of Infineon Technologies, Infineon Technologies' products may not be used in any applications where a failure of the product or any consequences of the use thereof can reasonably be expected to result in personal injury.