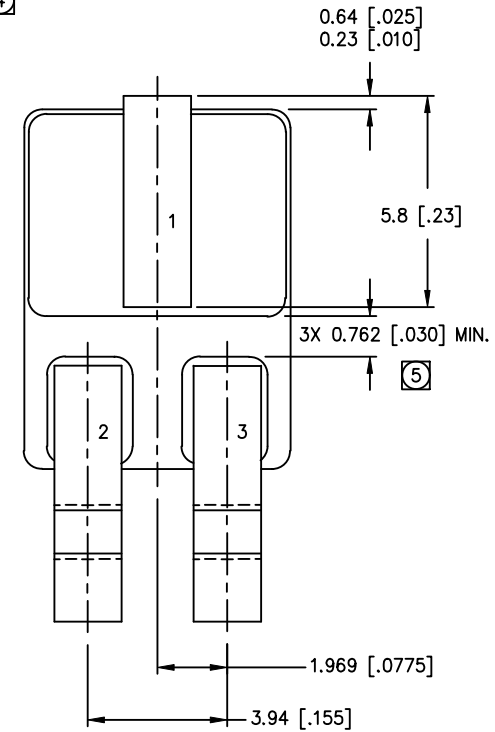
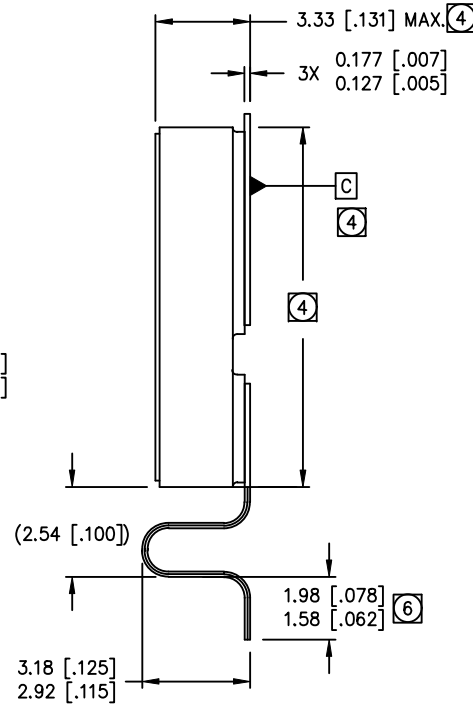
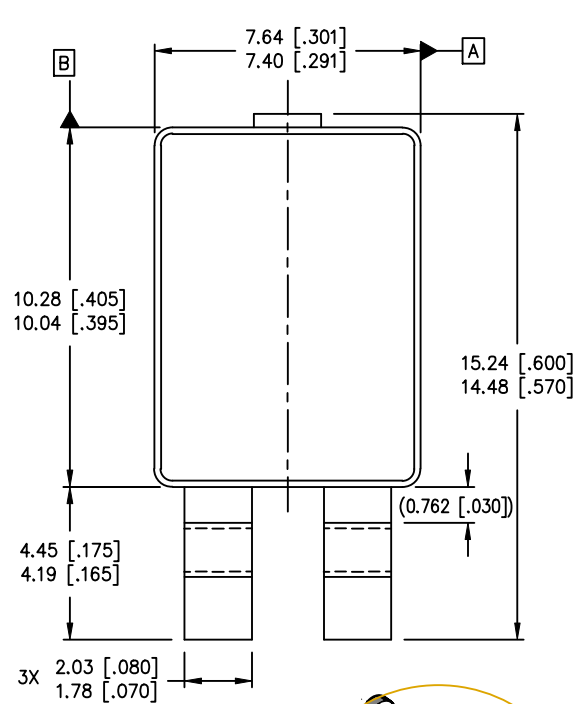
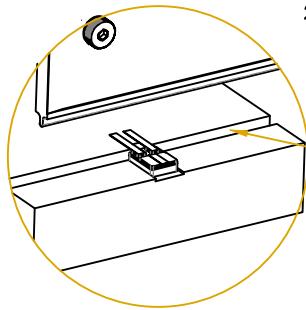


| REV. | DESCRIPTION | ECN | DATE |
|------|----------------|------------|--------|
| E | CHANGE PER ECN | 1120_08143 | 8-4-20 |



Use F021370 to cut tie-bar, next use F021371 to cut drain lead, lastly use F021365 to form the bend.



Ensure part is pressed up against rail.

NOTES:

1. DIMENSIONING & TOLERANCING PER ASME Y14.5M-1994
2. CONTROLLING DIMENSION: INCH.
3. DIMENSIONS ARE SHOWN IN MILLIMETERS [INCHES].
- (4) DATUM PLANE C & MAX. HEIGHT DIMENSION ARE MEASURED WITHIN THIS AREA.
- (5) DIMENSION INCLUDES METALLIZATION FLASH.
- (6) DIMENSION IS LENGTH OF LEAD FOR SOLDERING TO A SUBSTRATE.
7. THE ONLY AVAILABLE FINISH OPTION IS 100%Au.

IOR HiRel
An Infineon Technologies Company

TITLE:
SMD-0.5 LEADFORMED OUTLINE

DRAWING NO.
D100824G-WEB

REV E