



THE BEAST

AUTOMOTIVE IN-CABIN WIRELESS CHARGING TRANSMITTER
SPK-4101-3C15A

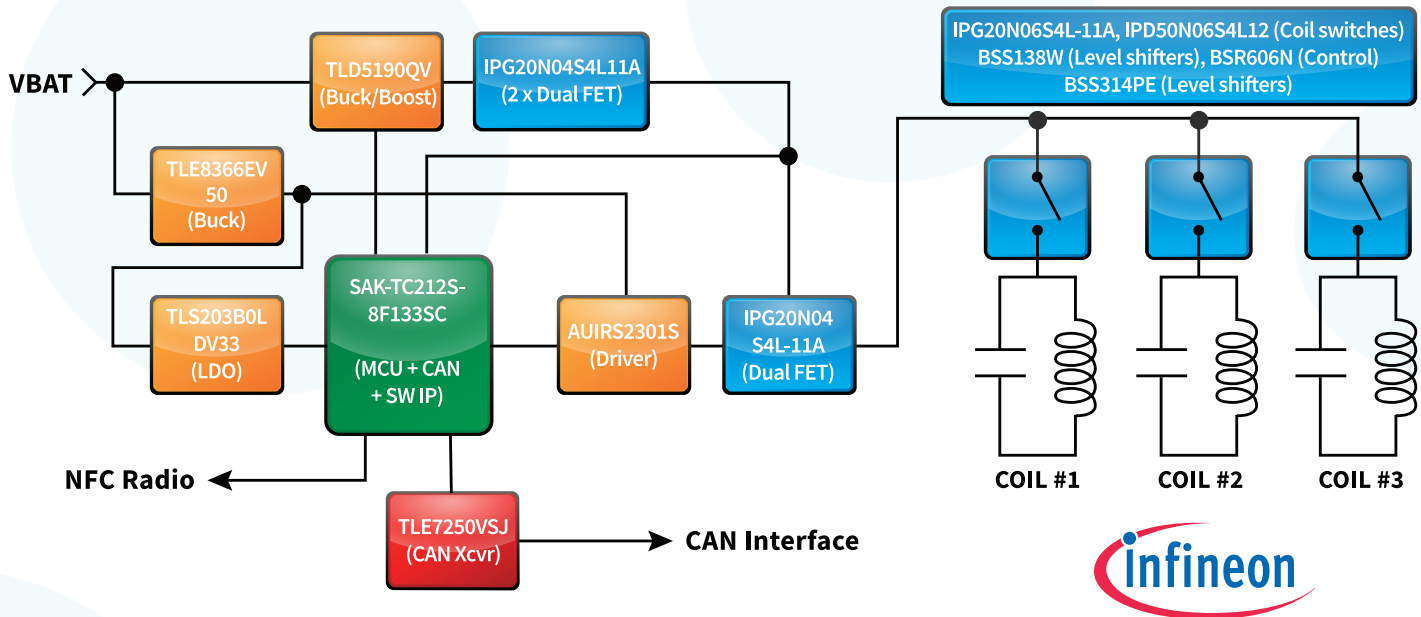
FEATURES

- WPC/Qi v1.2.4 15W EPP certified
- Supports all fast charge smartphones
- Supports future products and standards with a firmware upgrade
- Charger is backward compatible with low-power and legacy devices
- Fixed frequency architecture to meet strict automotive requirements
- CISPR 25 Class 4 certified, unique power drive architecture minimizes EMI
- Precise frequency control to prevent adverse effects on other automotive systems
- Full power charging with a 6 - 19V input supply, supporting stop/start
- Supports multi-coil configurations (standard and custom)
- Standard 3 coil (MP-A13 or MP-A9), 2 coil and single coil solutions
- Single MCU supports wireless charging, system application, CAN and external NFC interface functions



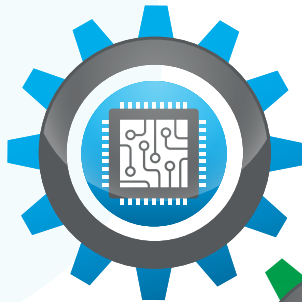
spark
connected
Powering the world, wirelessly

BLOCK DIAGRAM



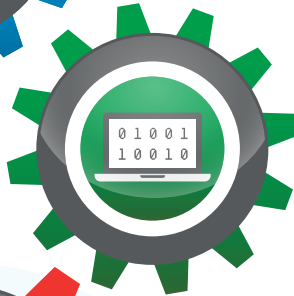
PARTNERING WITH SPARK CONNECTED

COMPLETE END-TO-END SYSTEM SOLUTIONS



SYSTEM HARDWARE DESIGNS

- Customer UX requirements
- System level modeling & simulations
- Hardware schematic design
- PCB layout
- Coil magnetic flux modeling & simulations
- Coil and Antenna designs



APPLICATION SOFTWARE DESIGNS

- Intelligent Control Systems
- API, Algorithm & Artificial Intelligence
- Thermal and emissions modeling
- Validation & test using prototype hardware
- Data Architecture & Code Release
- Maintenance & configuration control



WIRELESS POWER SYSTEM INTEGRATION



- Support customers integrate wireless charging in their end-product
- Qi pre-compliance testing
- Support customer during final Qi certification process
- Support partners during the regulatory approval process